

CERTIFICATE OF LOCATION OF GOVERNMENT CORNER

NORTH QUARTER Corner of Section 5, Township 105, Range 41, 5TH P.M.

STATE OF MINNESOTA, County of MURRAY

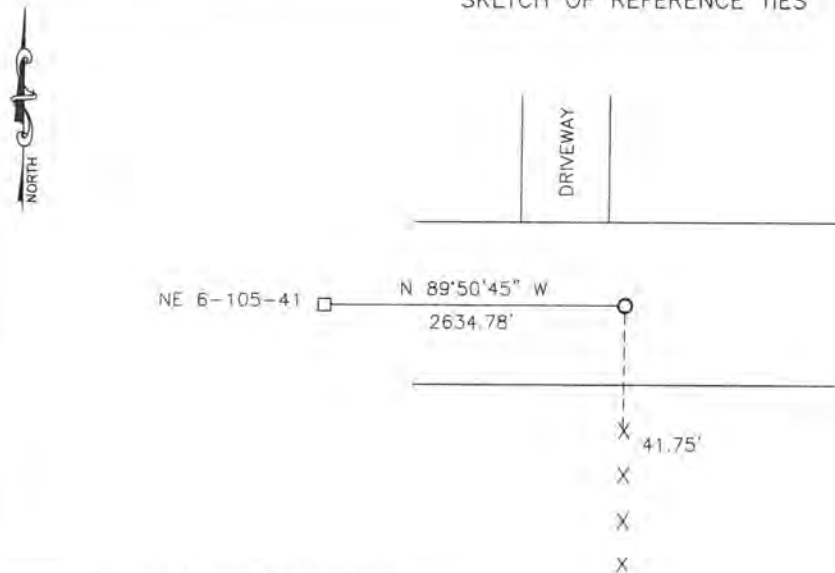
At the corner location shown on the sketch:

On 06-29-2017 found a CAST IRON MONUMENT

left monument as found, lowered monument, removed monument (explain)

On 07-05-2017 placed a 5/8" IRON WITH SEAL #43844 OVER CAST IRON MONUMENT

SKETCH OF REFERENCE TIES



Minnesota State Plane Coordinate System Murray County Datum NAD83 (1996)

N: 131753.485
E: 492853.161

Nail and bottle cap in end fence post South 41.75'

Statement of evidence relative to this corner location is on back of page.

I hereby certify that this document and the data contained herein was prepared by me or under my direct supervision.

[Signature] 2/20/18
SIGNATURE DATE

Registration No. 43844

Land Surveyor, Professional Engineer
 County Surveyor, County Engineer

STATE OF MINNESOTA, }
COUNTY OF MURRAY, } ss.

I hereby certify that the within Instrument was filed in this office for record on the 26th day of MARCH A.D. 20 18 at 9:00 o'clock A. M. and was duly recorded as Document No.

[Signature]
County Recorder

Statement of Evidence

In 1861, J.W. Myers did the original survey of the north line of the township.

On December 20, 2011, Zieske Land Surveying found an iron monument at the corner.

On June 29, 2017, Bueltel-Moseng Land Surveying found a cast iron monument 3.5'± below the surface of the road.

On July 5, 2017, Bueltel-Moseng Land Surveying set a 5/8" iron with seal #43844 over the cast iron monument.